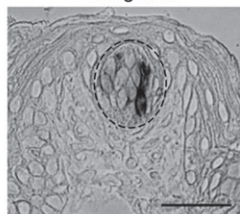
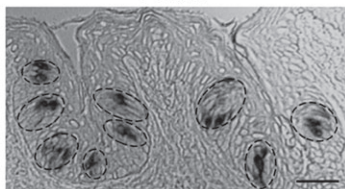
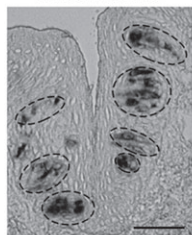


Chemical Senses

Circumvallate

Foliate

Fungiform



In this issue:

Crypt Cell Development in Sturgeons

Molecular Receptive Ranges of Human
Bitter Taste Receptors

Lrmp/Jaw1, a Candidate Regulator of Type III
Inositol Trisphosphate Receptor in Sweet, Bitter,
and Umami Taste Cells

In association with
Association for Chemoreception Sciences
European Chemoreception Research Organization
Japanese Association for the Study of Taste and Smell

www.chemse.oxfordjournals.org



OXFORD JOURNALS
OXFORD UNIVERSITY PRESS